

**PLUME**

# PLUME

PLUME's origin is a blend of premium Napa and Sonoma Valley vineyards, grown and crafted in California's premier viticulture and winemaking regions. PLUME relays a story of both partnership and flight: the handsome California Quail, an extremely sociable bird found across the Western US and Canada, has a small feather plume at its head. The feather's stylized classic nature evokes strength, grace and origin and is a symbol of special honor.

A high quality expression of what makes California the North American home of Cabernet Sauvignon, PLUME delivers the richness and elegance of premium California winemaking at respectable value to the consumer.



# PROUDLY FAMILY OWNED

## The Stewart Family

Pioneers of the early wine industry in Canada, the Stewarts arrived from Ireland in the early 1900s and quickly carved a niche for themselves as specialized rootstock horticulturists. This swiftly established the Stewarts, now three generations at play as premium Okanagan Valley grape growers. On a prized piece of land they created the family winery – Quails' Gate Winery, recognized internationally as a premium producer of Pinot Noir.

Plume is an extension of this recognition and is the creation of talent and passion, marrying the great enjoyments of making fine wine with the best family hospitality – great wine, from a great place, at a great value, shared with likeminded good people. This collective wisdom is merely a “feather in their cap.”



Tony, Cynthia, Dick, Rosemary, Ben & Andrea Stewart



# STEWART FAMILY HISTORY



- Irish Roots – immigrated to Canada in 1908.
- Started growing grapes in the Okanagan Valley in 1956. Growers for pioneering Okanagan Valley wineries.
- Started Quails' Gate winery in 1989.
- One of the top wine and culinary destinations in Canada.
- Diversified into California in 2013 with the purchase of Lake Sonoma Winery.

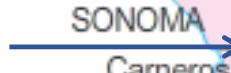


*PLUME*  
PLUME

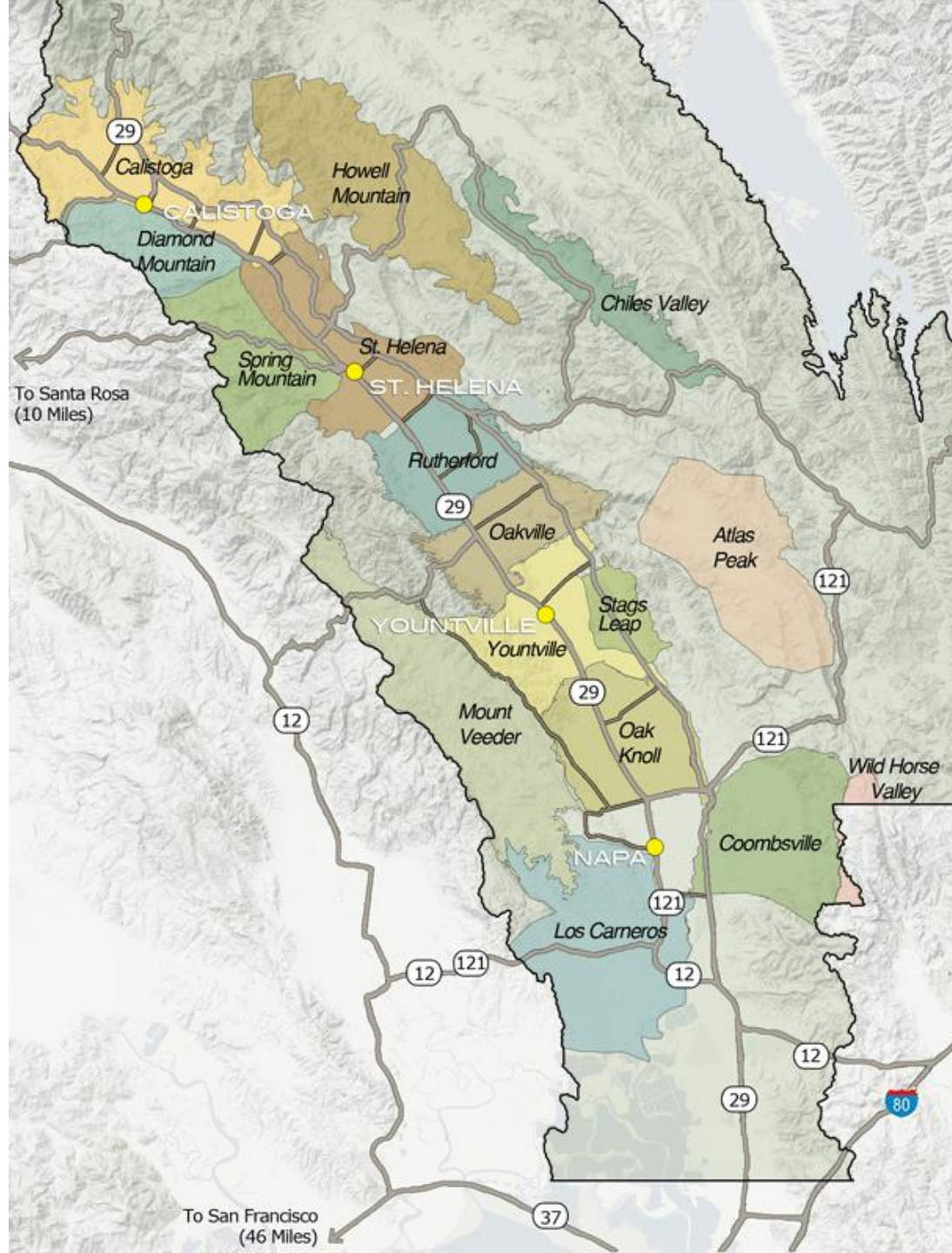


# NAPA VALLEY

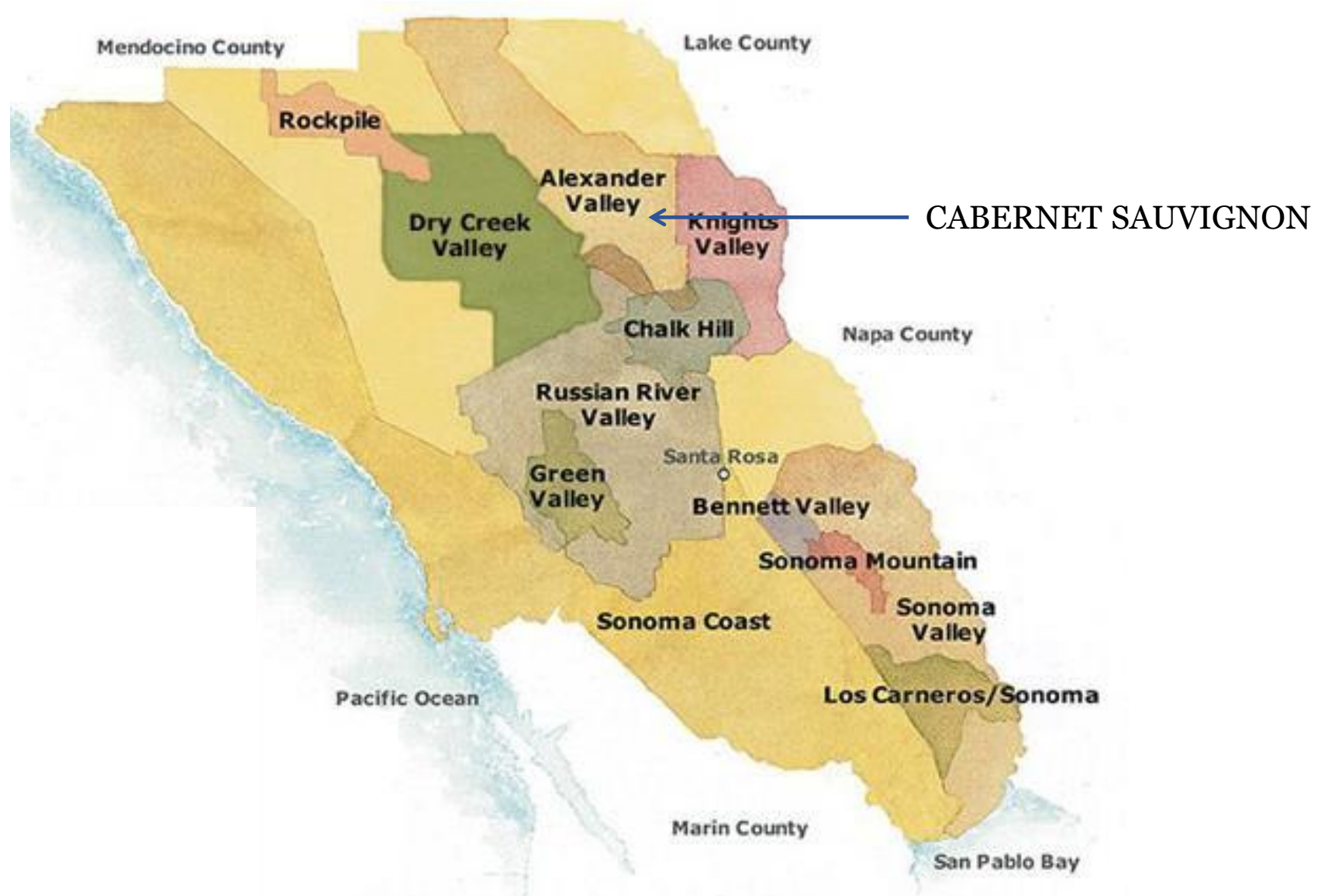
CHARDONNAY



# NAPA VALLEY



# SONOMA VALLEY











# OUR CELEBRATED WINEMAKING TEAM



## **Susan Doyle, VP Operations**

Susan joined Stewart Family Estates in 2018 bringing with her over 25 years experience that spans the globe. Australian born and raised, she has worked in wine regions around the world with the last 15 years in Napa. Susan has been named in the Wine Spectator Top 100 Napa Cabernet producers and included in the Wine Spectator 90+ club 2011-2014.



## **Mark Beaman, Senior Winemaker**

Our Senior Winemaker Mark Beaman joined the team in 2019, most recently moving from Hawaii where he was responsible for the designation of the first ever AVA for the state of Hawaii. Over nearly 20 years in the wine industry, he has crafted numerous 90+ points wines and earning many gold medals from Wine Enthusiast.



# PLUME WINES



## CABERNET SAUVIGNON 2016

### WINE STYLE

Lush in texture with dark ripe fruits and signature Cabernet Sauvignon tannins.

### FOOD PAIRING

Slow cooked brisket or tri-tip sirloin, grilled portobello mushrooms and all barbecue fare.

### WINEMAKING

A blend of fruit from the best vineyards in the Alexander Valley. Aged for 12 months, 25% new French Oak.

### TECHNICAL NOTES

Alcohol volume: 14.5 %  
Residual sweetness: 0.4 g/l  
Blend: Cabernet Sauvignon, a touch of Malbec, Petit Verdot, Merlot and Cabernet Franc





# PLUME WINES



## CHARDONNAY 2018

### WINE STYLE

Bright aromas of pear, white peach and stone fruits. Tropical flavors on the palate with papaya Asian pear apple and just a kiss of sweet toasted oak.

### FOOD PAIRING

Freshly cut pears with burrata, mozzarella or aged cheeses and summer salads of just-picked greens and creamy dressings. Homemade pasta tossed in olive oil and Parmigiano Reggiano.

### WINEMAKING

50% Malolactic fermentation. Aged 4 months, 25% new French oak.

### TECHNICAL NOTES

Alcohol volume: 14.26 %  
Acid: pH 3.62  
TA: 6.6 g/l  
RS: 0.6 g/l





THANK YOU



PLUME